

*** A Distributed Proofreaders Canada Ebook ***

This ebook is made available at no cost and with very few restrictions. These restrictions apply only if (1) you make a change in the ebook (other than alteration for different display devices), or (2) you are making commercial use of the ebook. If either of these conditions applies, please check with an FP administrator before proceeding.

This work is in the Canadian public domain, but may be under copyright in some countries. If you live outside Canada, check your country's copyright laws. **If the book is under copyright in your country, do not download or redistribute this file.**

Title: Through Mountains and Canyons. The Canadian Rockies.

Author: Notman, William McFarlane (1857-1913)

Date of first publication: 1906

Edition used as base for this ebook: Montreal: Wm. Notman & Son, 1906 [first edition]

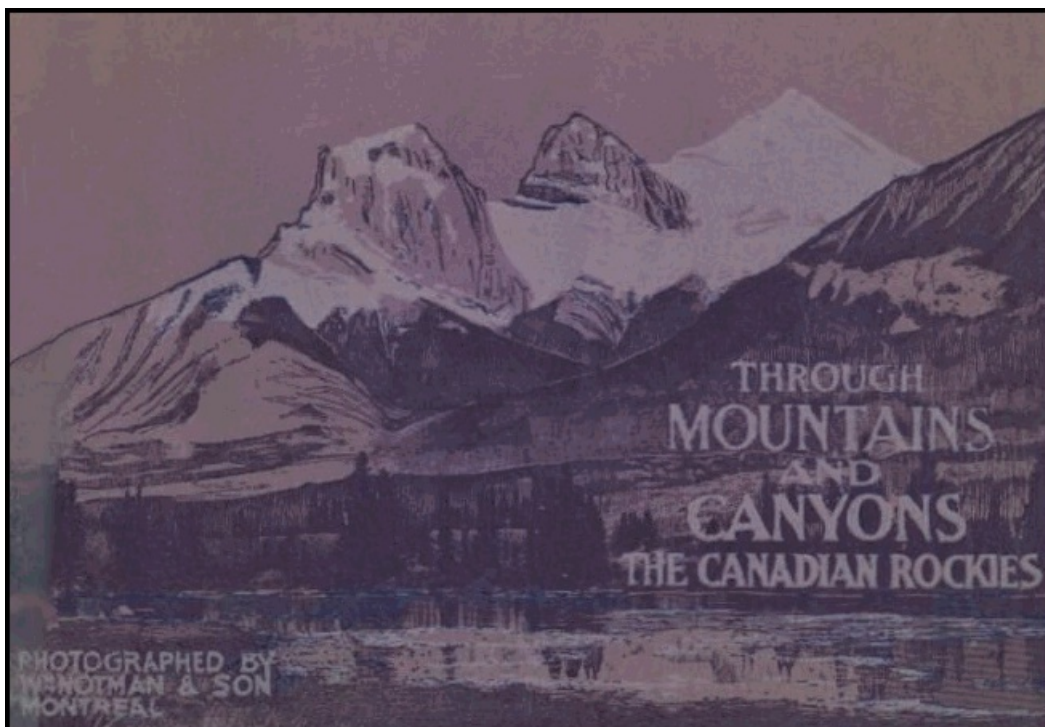
Date first posted: 14 May 2011

Date last updated: 30 June 2014

Faded Page ebook#20110309

We have named William McFarlane Notman as this book's author, since he is known to have travelled many times to Western Canada to take photographs. He was a partner in his father's famous photographic studio. The book itself does not name him specifically, but according to its cover was "photographed by Wm. Notman & Son Montreal".

This ebook was produced by: Barbara Watson, Mark Akrigg & the Online Distributed Proofreading Canada Team at <http://www.pgdpCanada.net>



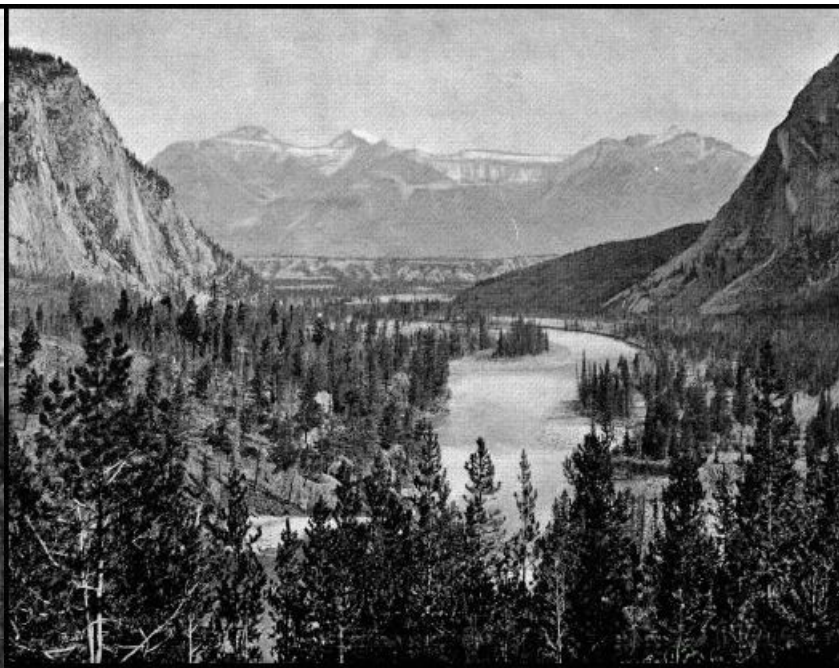
Entered According to Act of Parliament
of Canada,
in the Year 1906, at the
Department of Agriculture, by
Wm. Notman & Son.



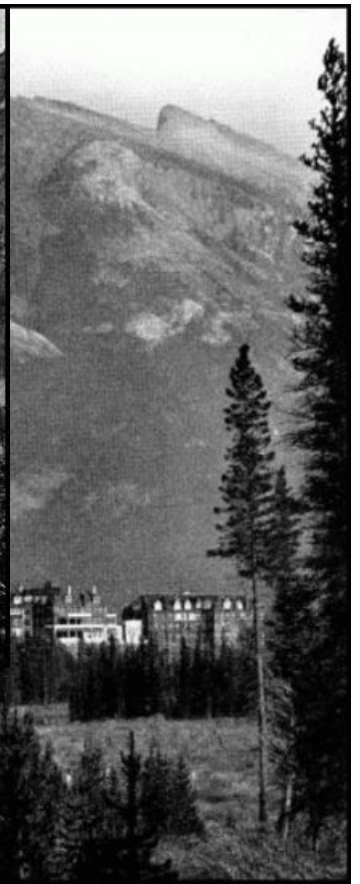
THE THREE SISTERS, CANMORE



BANFF SPRINGS HOTEL, FROM OVER
FALLS



BOW VALLEY, FROM
BANFF HOTEL



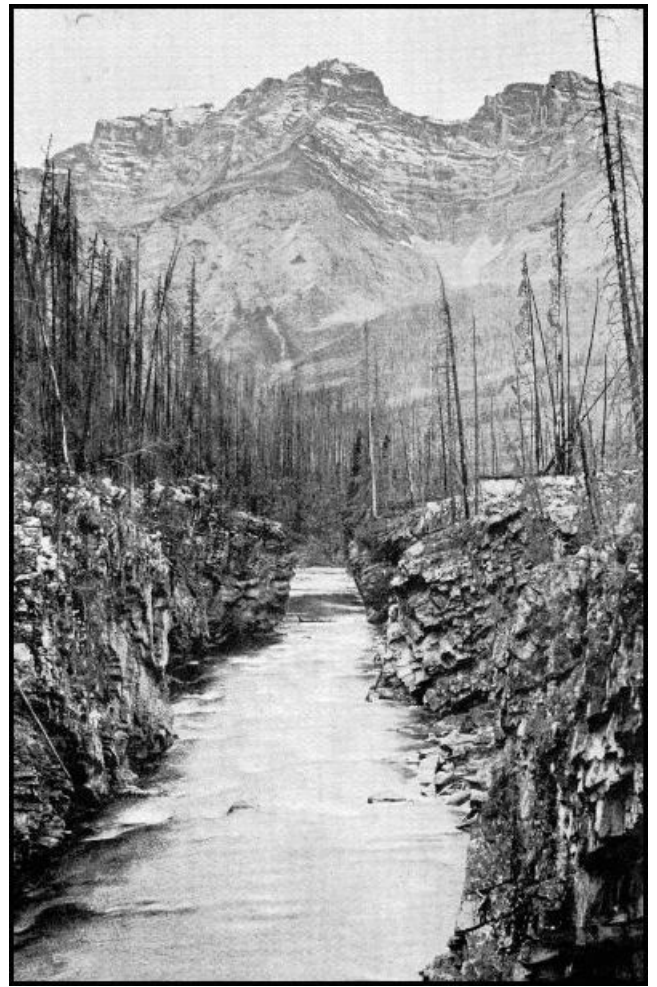
BANFF SPRINGS HOTEL AND MOUNT
RUNDLE



LAKE LOUISE, LAGGAN



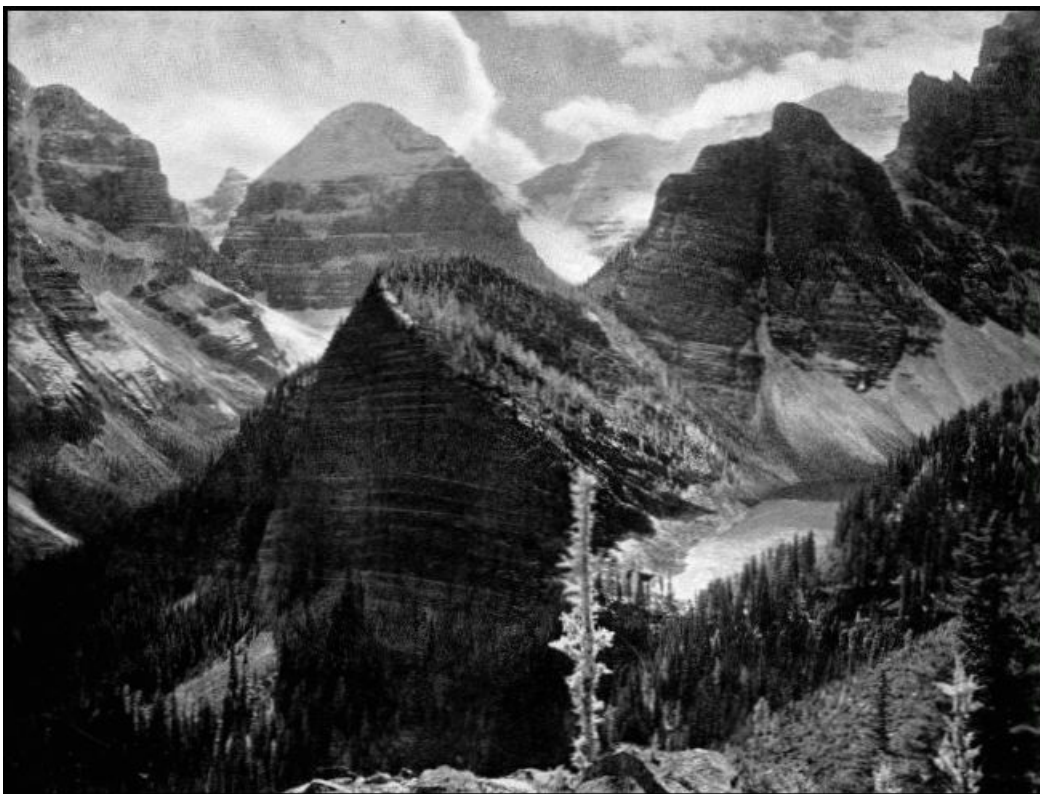
SUN DANCE CANYON, BANFF



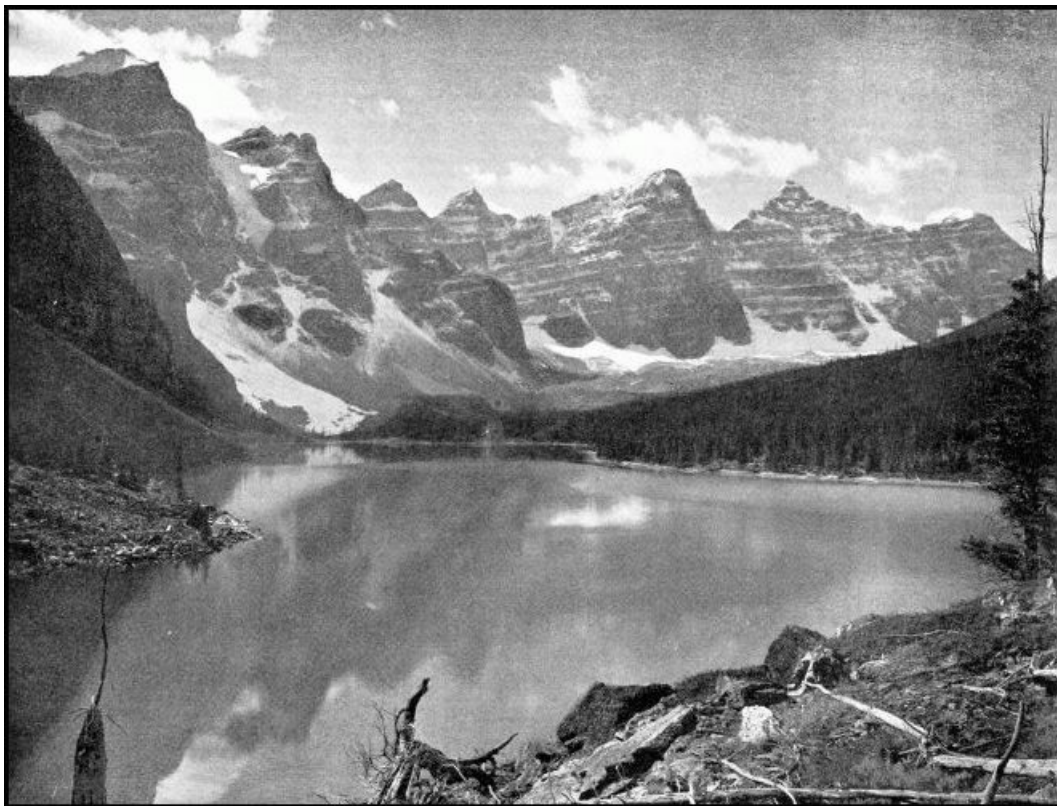
CASCADE MOUNTAIN AND CANYON



VICTORIA GLACIER, LAKE LOUISE



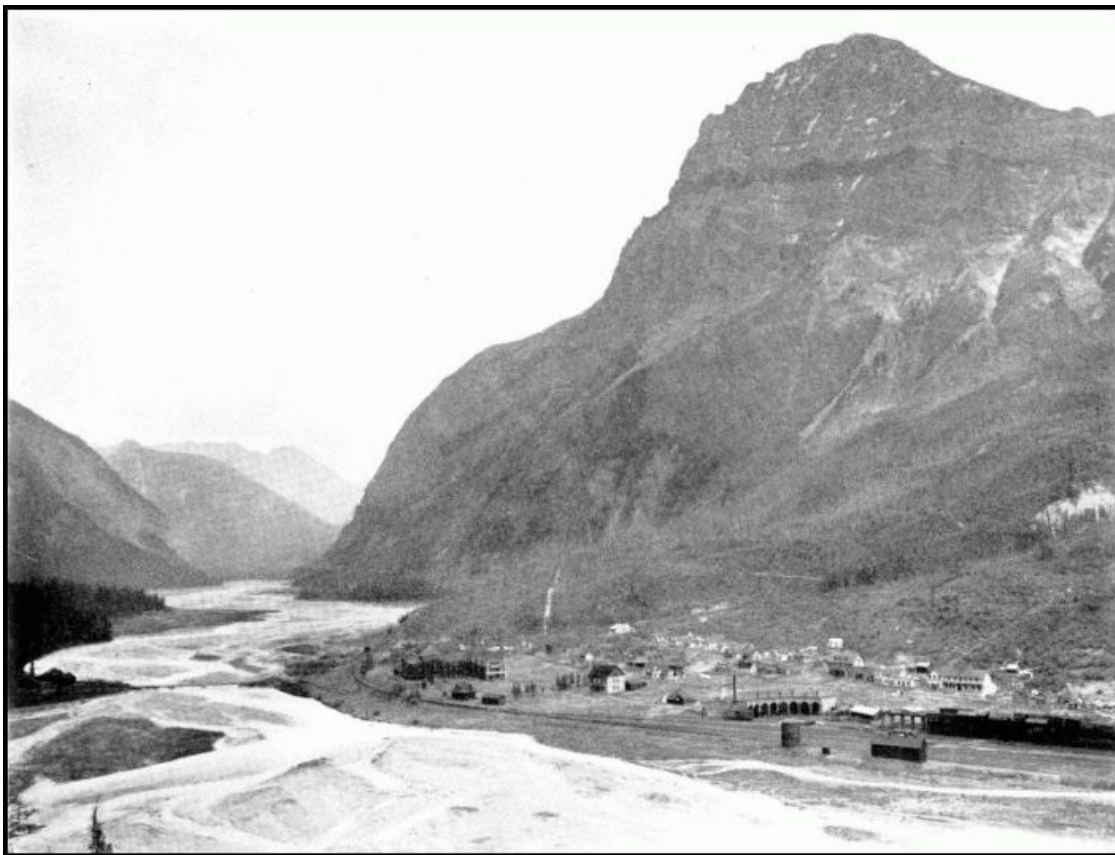
LAKE AGNES, CASTLE CRAGS, HAZEL PEAK AND MOUNT LEFROY



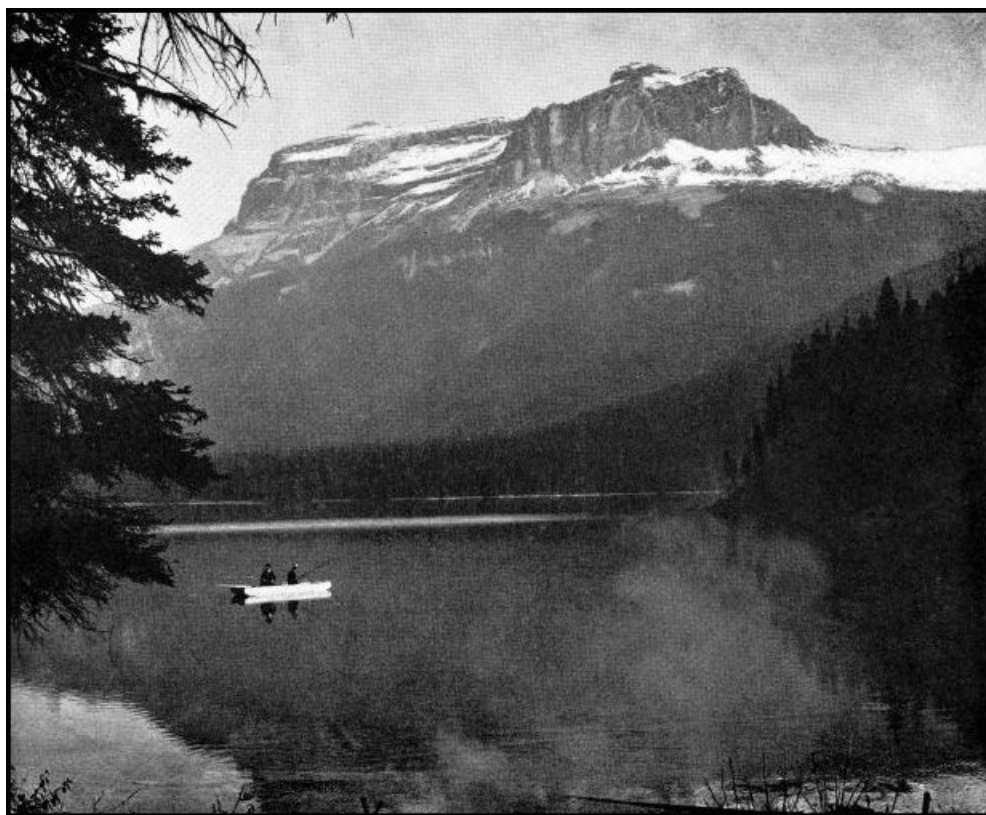
MORaine LAKE, VALLEY OF THE TEN PEAKS

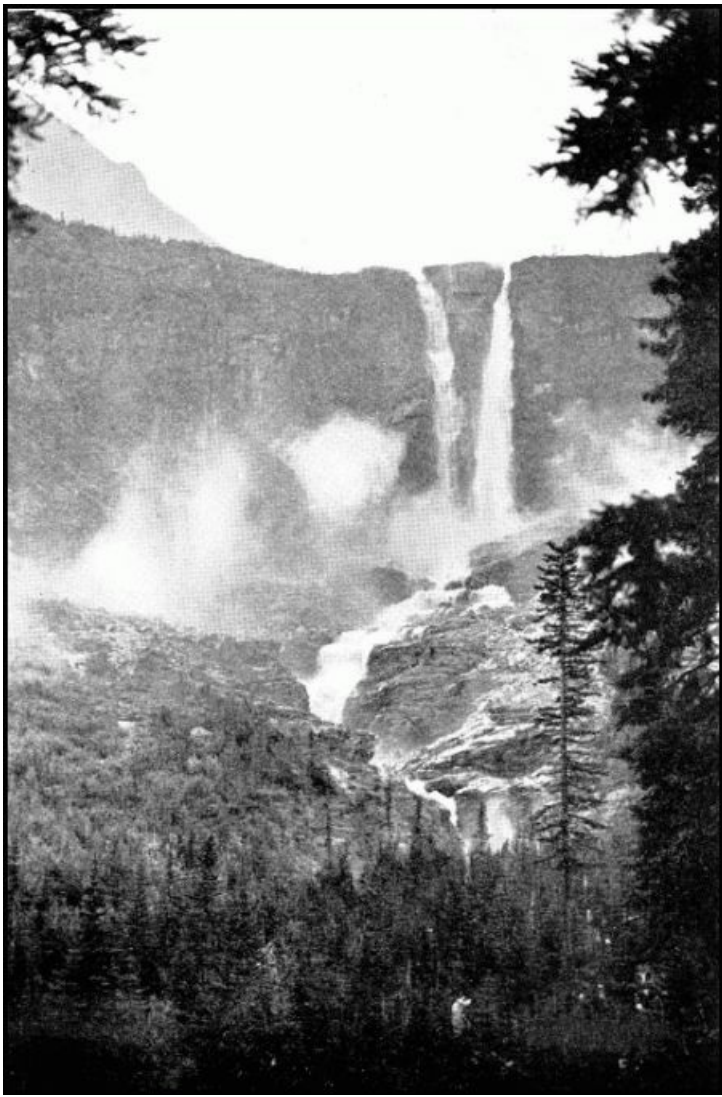


MOUNT STEPHEN



MOUNT STEPHEN AND FIELD, B.C.



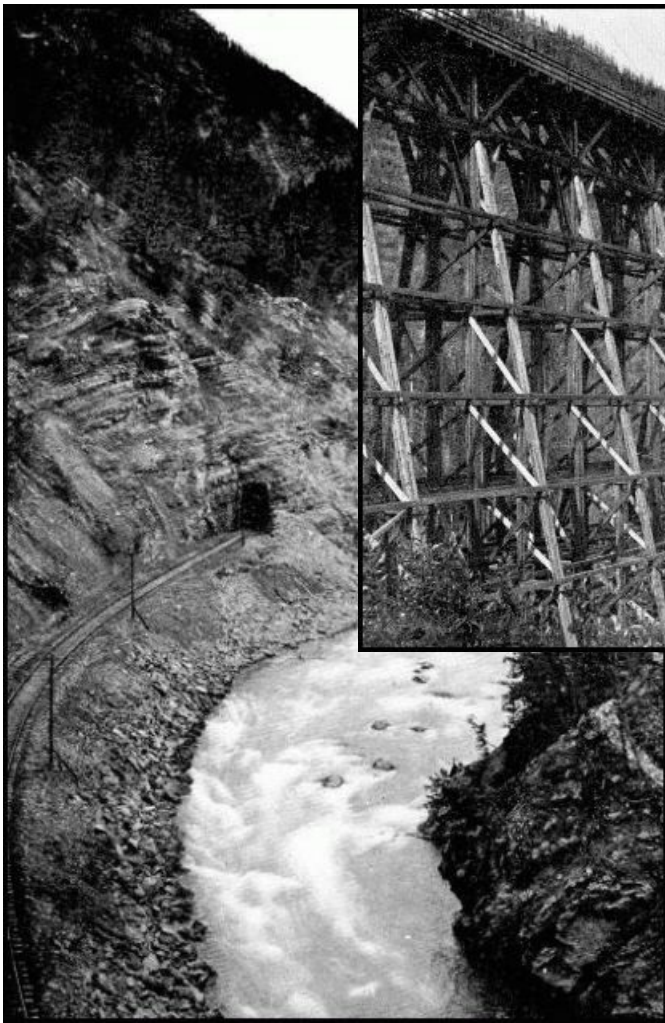


TWIN FALLS, YOH0 VALLEY

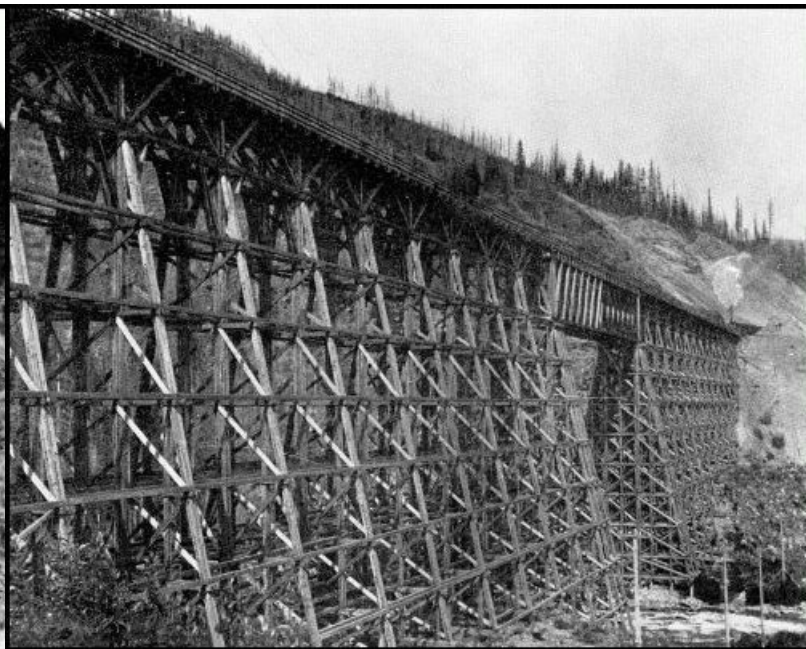


TAKAKKAW FALL, YOH0 VALLEY—1,200 feet high.

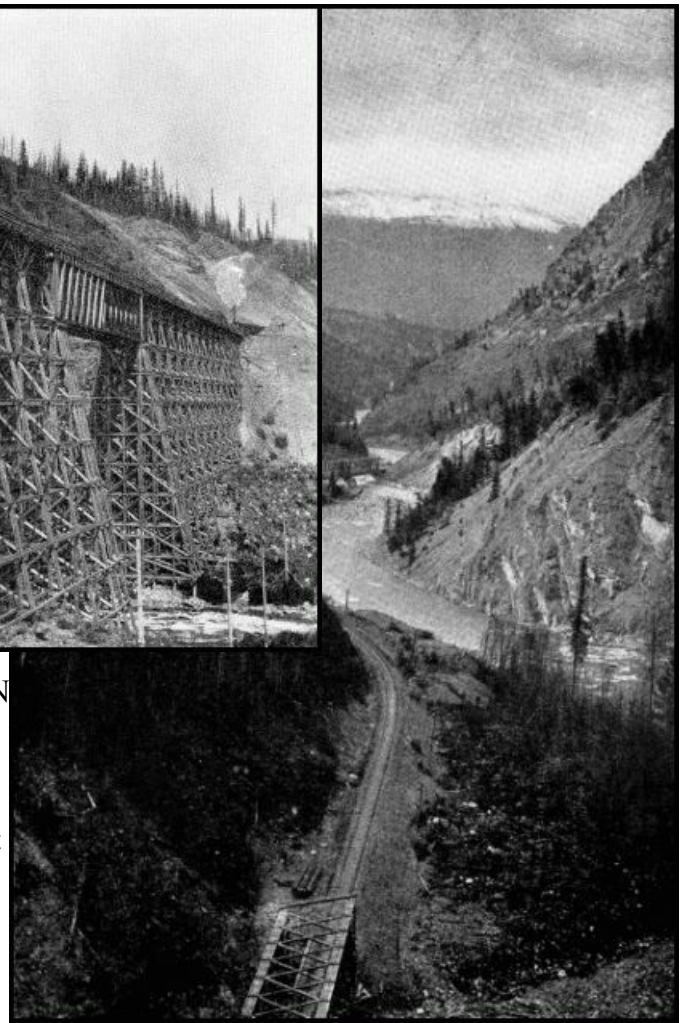
EMERALD LAKE, NEAR FIELD, B.C.



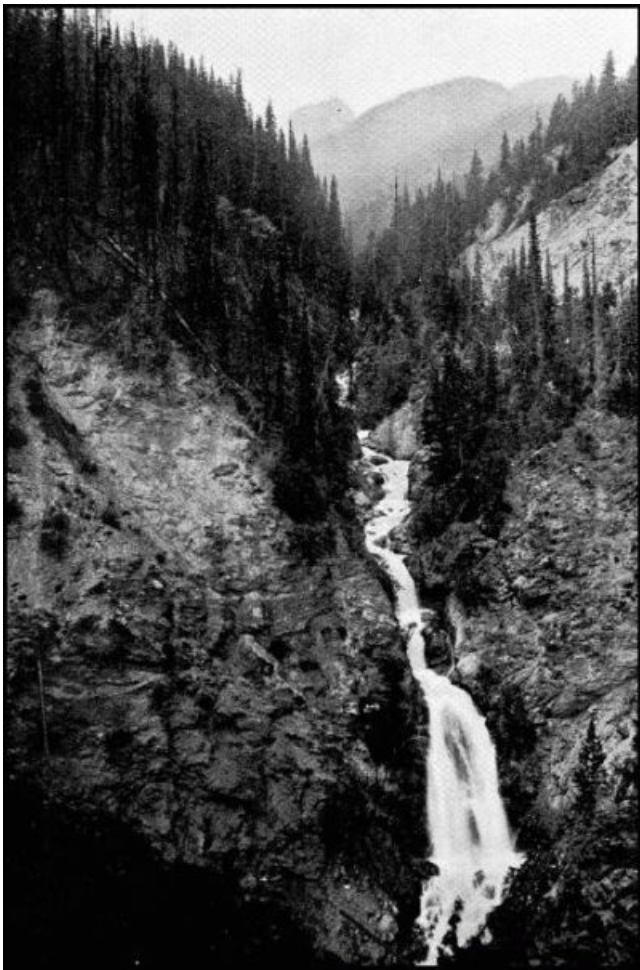
LOWER KICKING HORSE CANYON



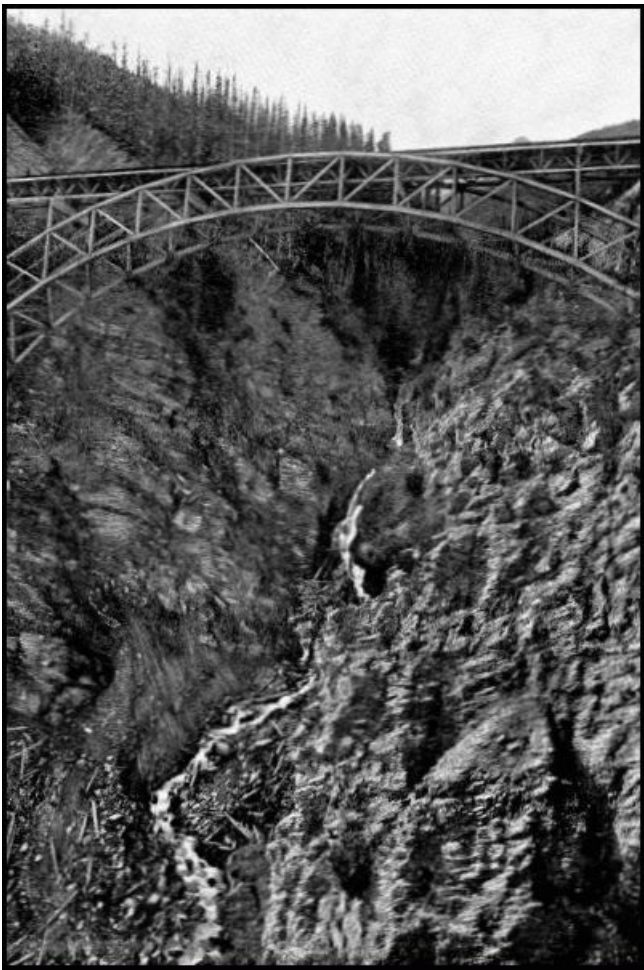
MOUNTAIN
CREEK
BRIDGE—
Containing
1,500,000 feet
timber.



LOWER KICKING HORSE CANYON, NEAR
GOLDEN, B.C.



STONY CREEK



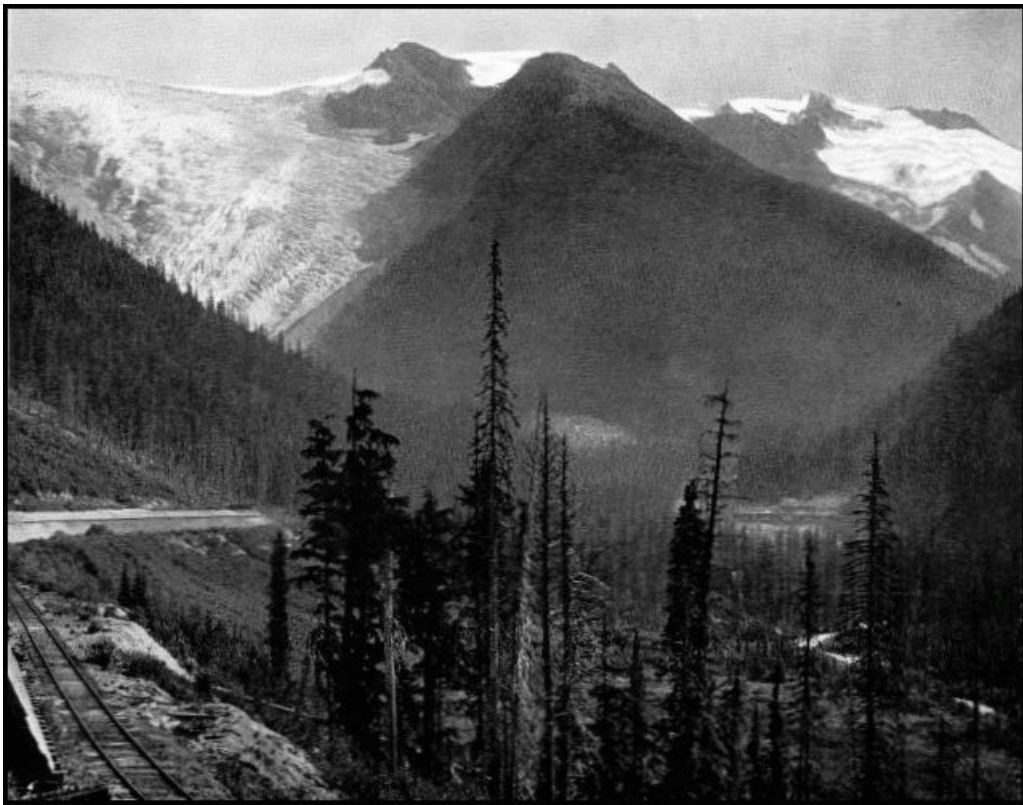
STONY CREEK BRIDGE—Height 296 feet.



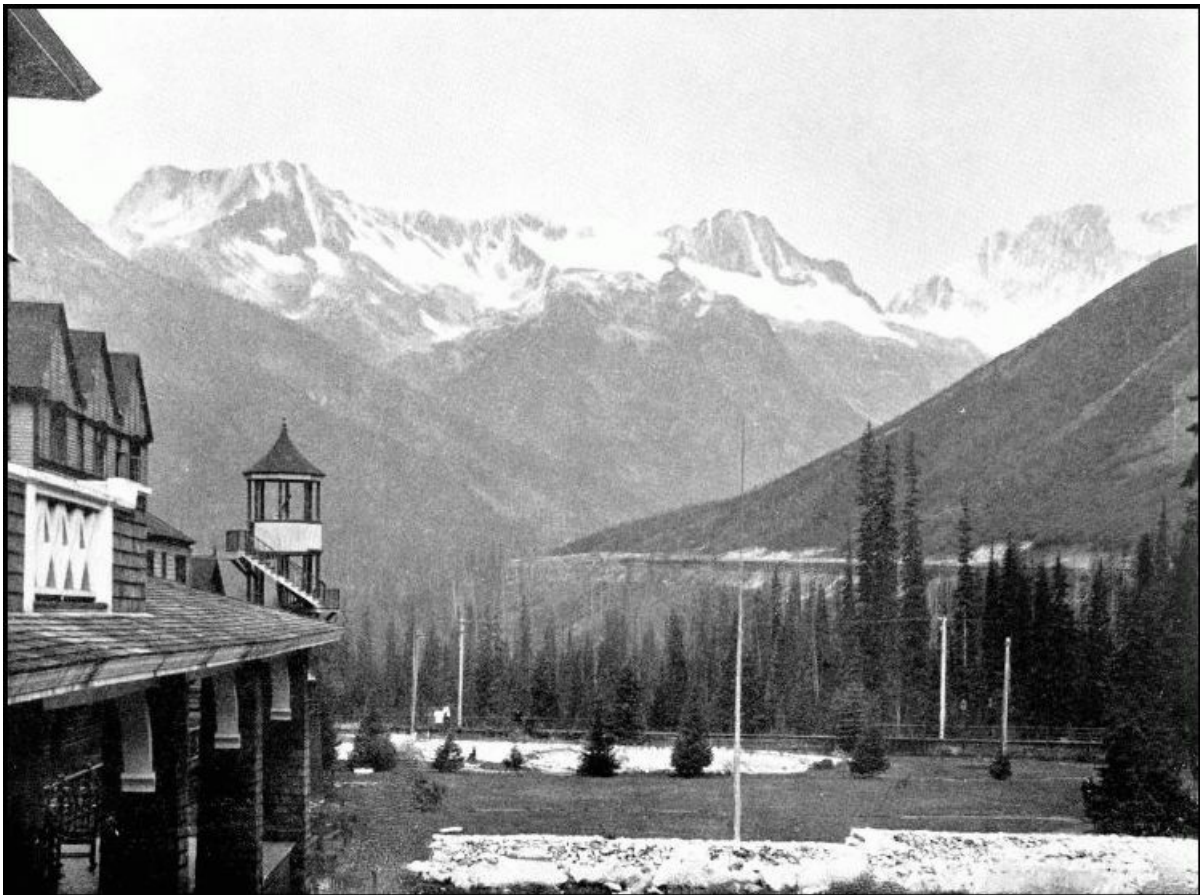
MOUNT MACDONALD, EAST SIDE



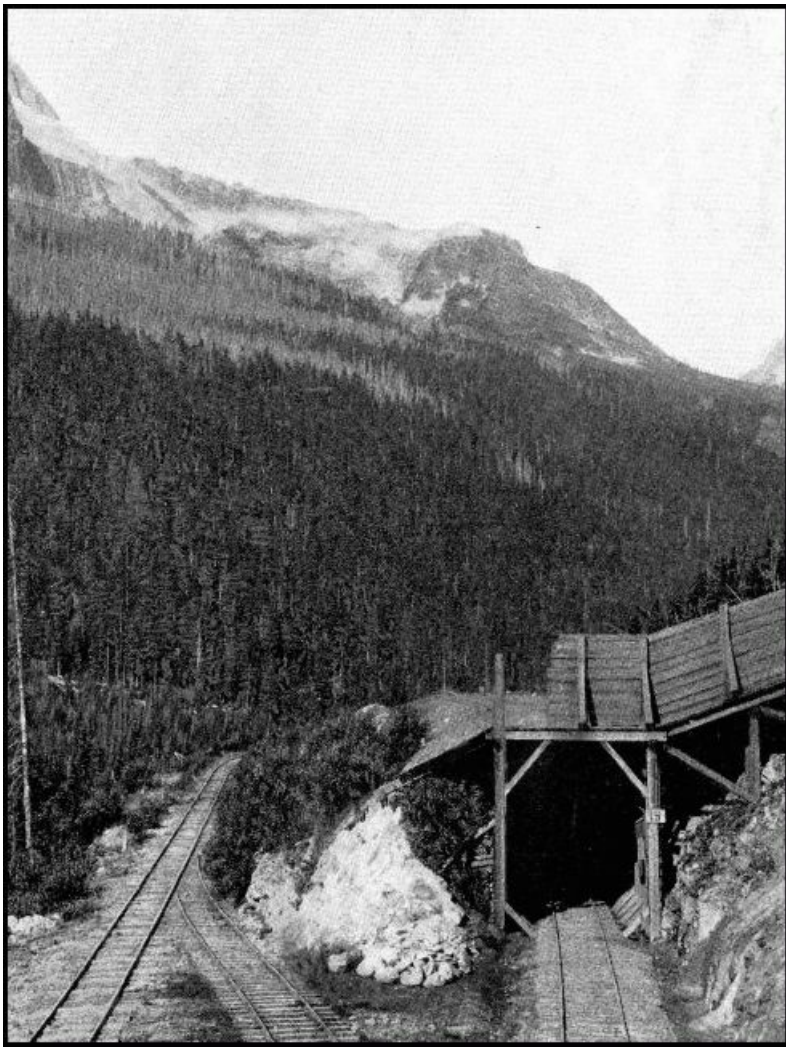
ROGERS PASS AND MOUNT MACDONALD



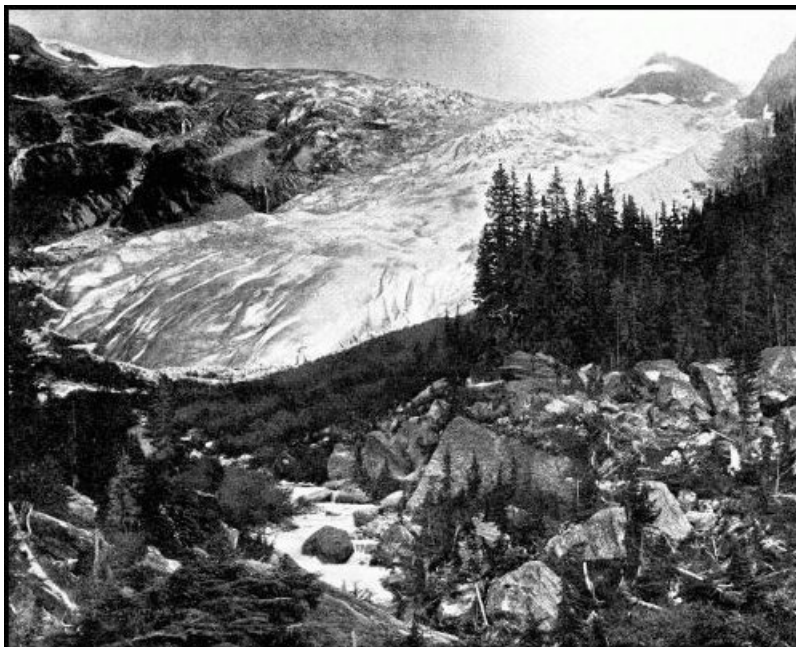
THE GREAT AND ASULKAN GLACIERS



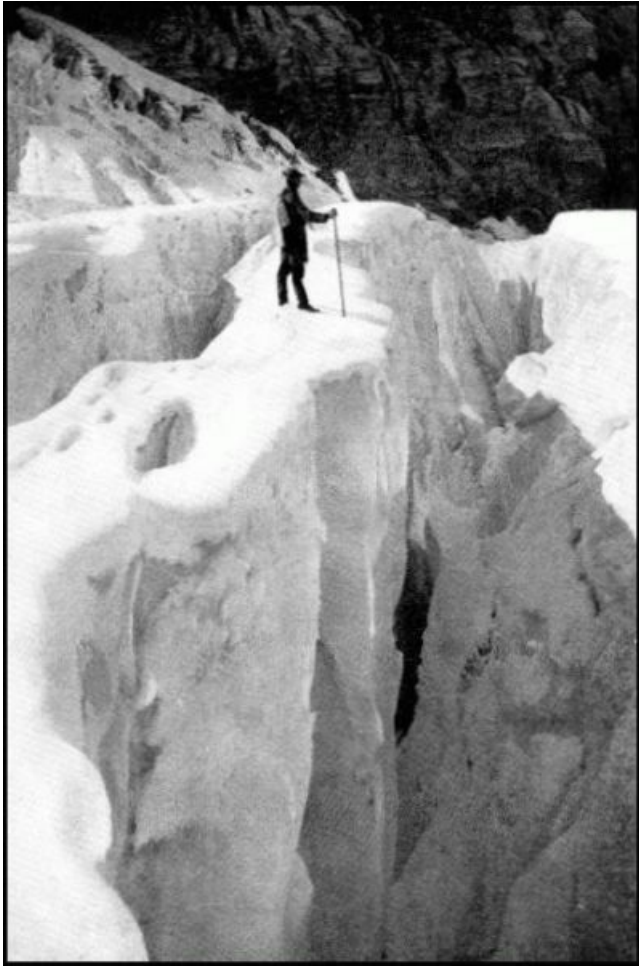
GLACIER HOUSE, GLACIER, B.C.



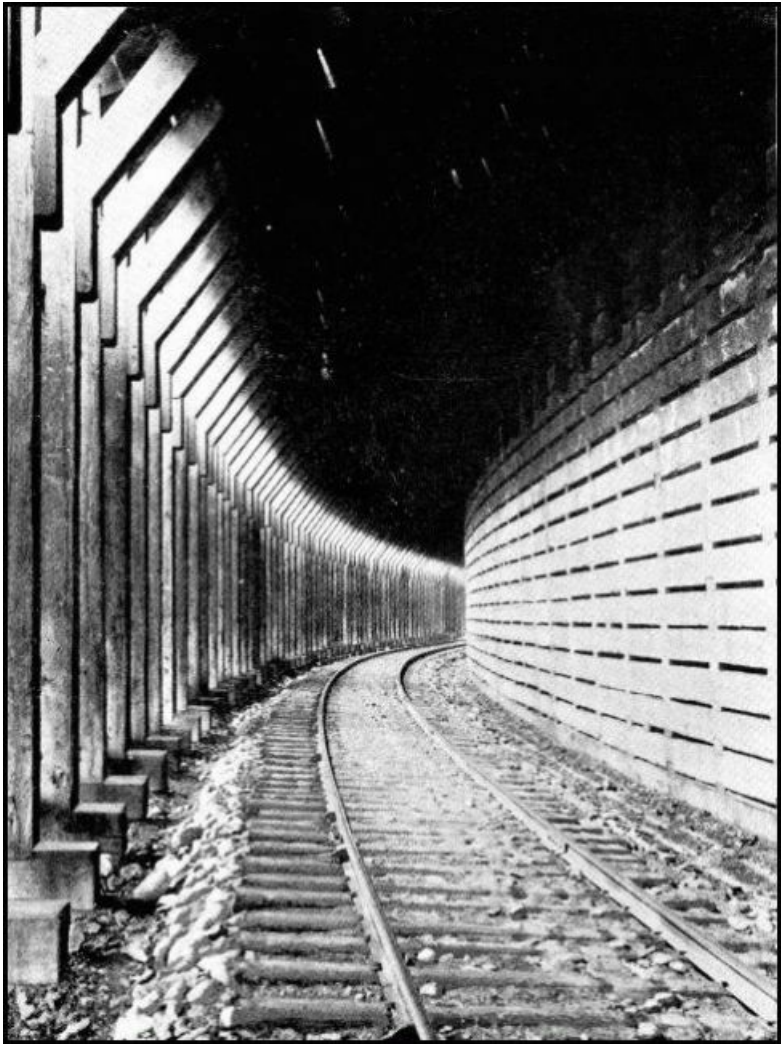
SUMMER AND WINTER TRACKS, NEAR GLACIER



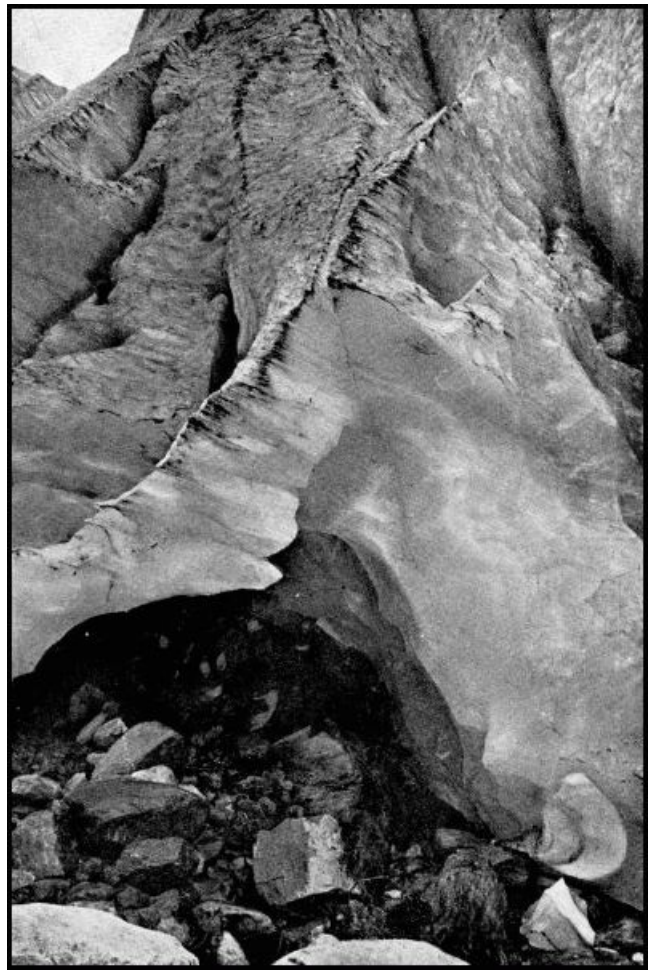
THE GREAT GLACIER OF THE SELKIRKS



CREVASSES, ASULKAN GLACIER



INTERIOR OF A SNOW SHED



ICE CAVE, THE GREAT GLACIER



ASULKAN GLACIER



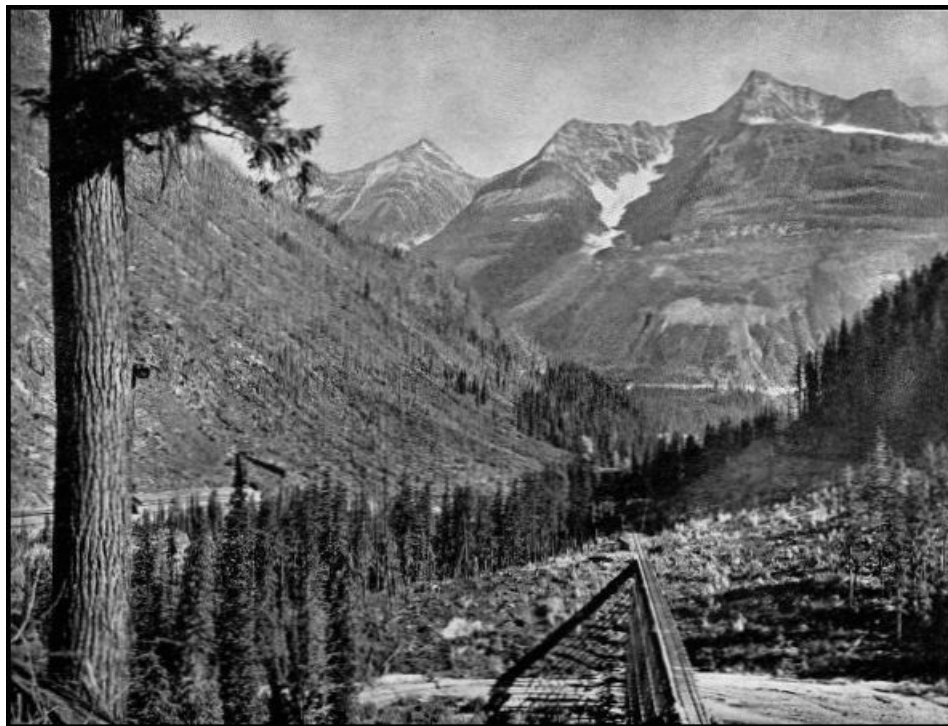
SIR DONALD AND THE GREAT GLACIER



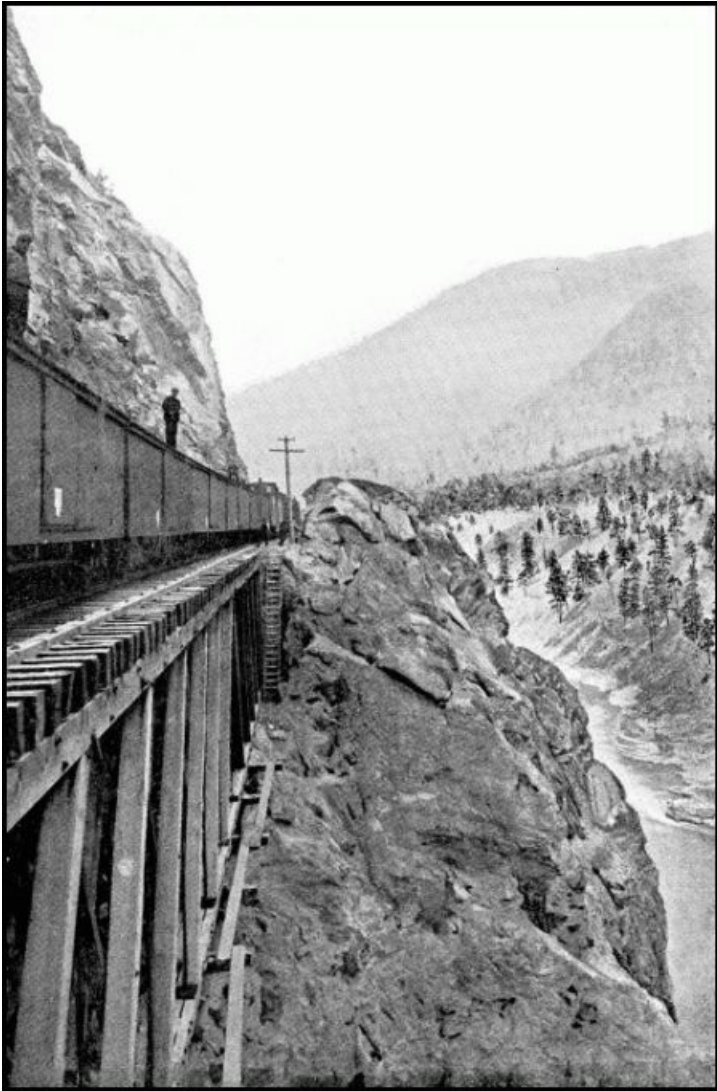
HERMIT RANGE, FROM MOUNT ABBOTT



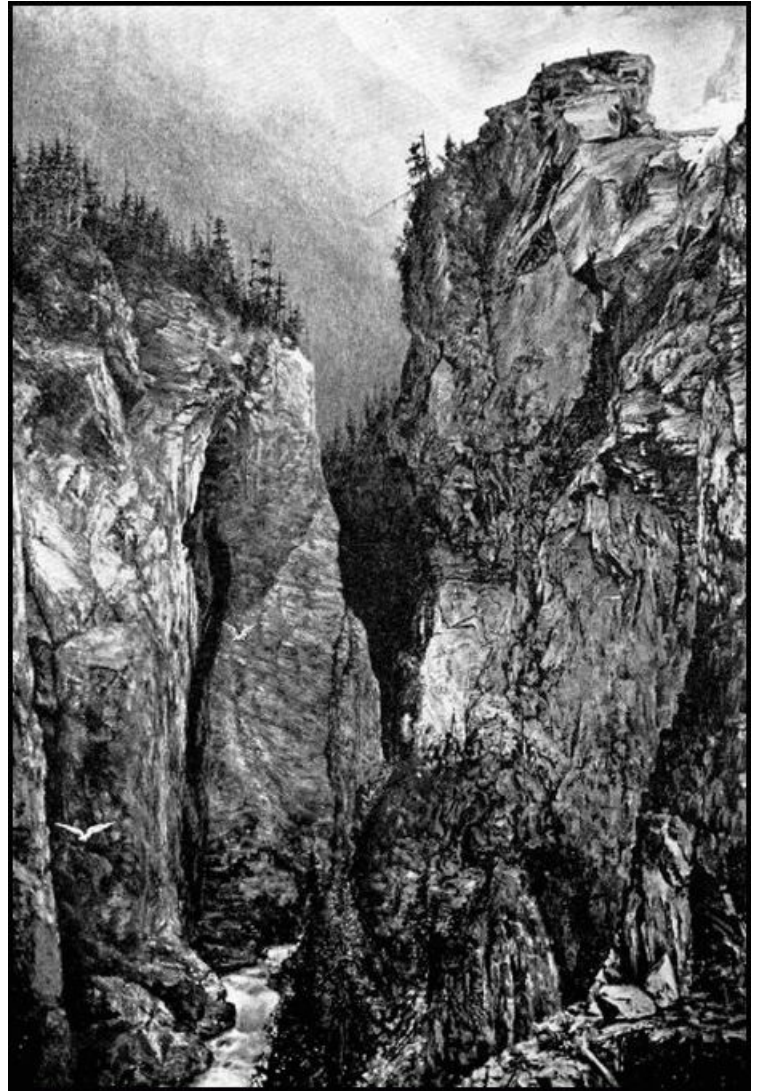
ILLECILLEWAET VALLEY AND LOOP, FROM MOUNT ABBOTT



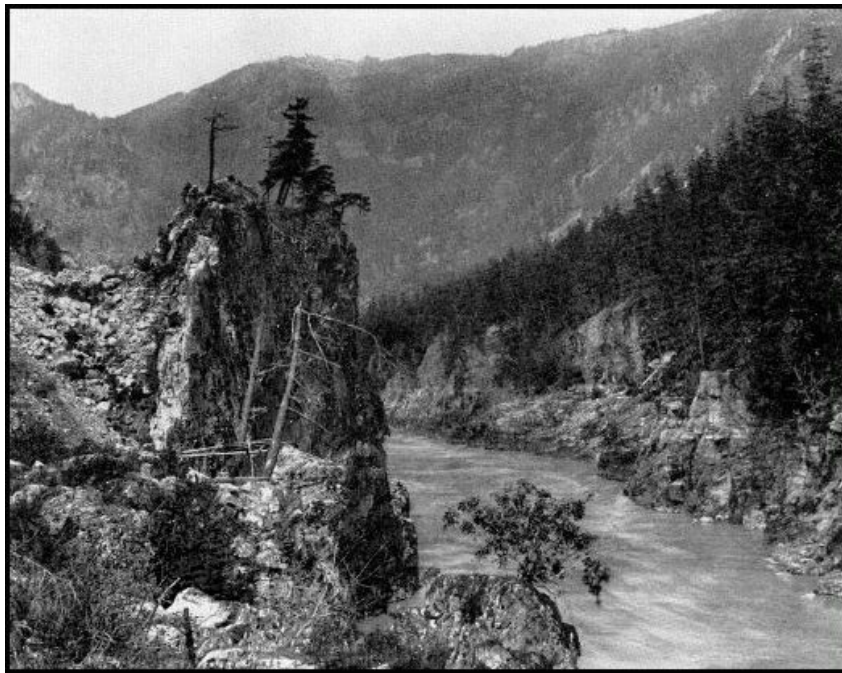
THE LOOP, SHOWING FOUR TRACKS



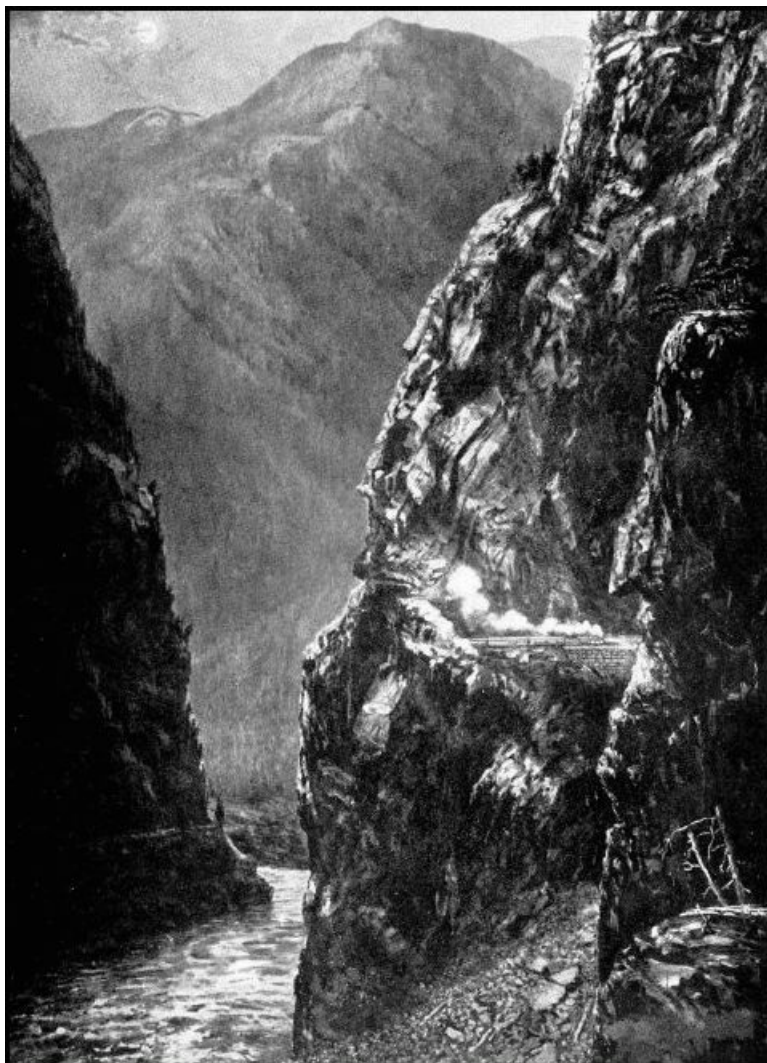
JAWS OF DEATH, THOMPSON CANYON



ALBERT CANYON



FRASER CANYON, BELOW NORTH BEND



MOONLIGHT, FRASER CANYON



CARIBOO ROAD BRIDGE, FRASER CANYON

[End of *Through Mountains and Canyons*, by William McFarlane Notman]